

Decking parts

Saw lumber planks



Code	Length	Max. span
WP12	3.66 m (12')	3.05 m (10')
WP10	3.05 m (10')	2.47 m (8')
WP09	2.75 m (9')	2.14 m (7')
WP08	2.47 m (8')	1.83 m (6')
WP07	2.14 m (7')	1.83 m (6') *
WP06	1.83 m (6')	1.53 m (5') *
WP05	1.53 m (5')	1.52 m (4') *

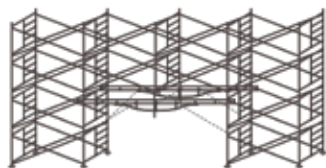
* For use with stopper

Aluminum and plywood decks



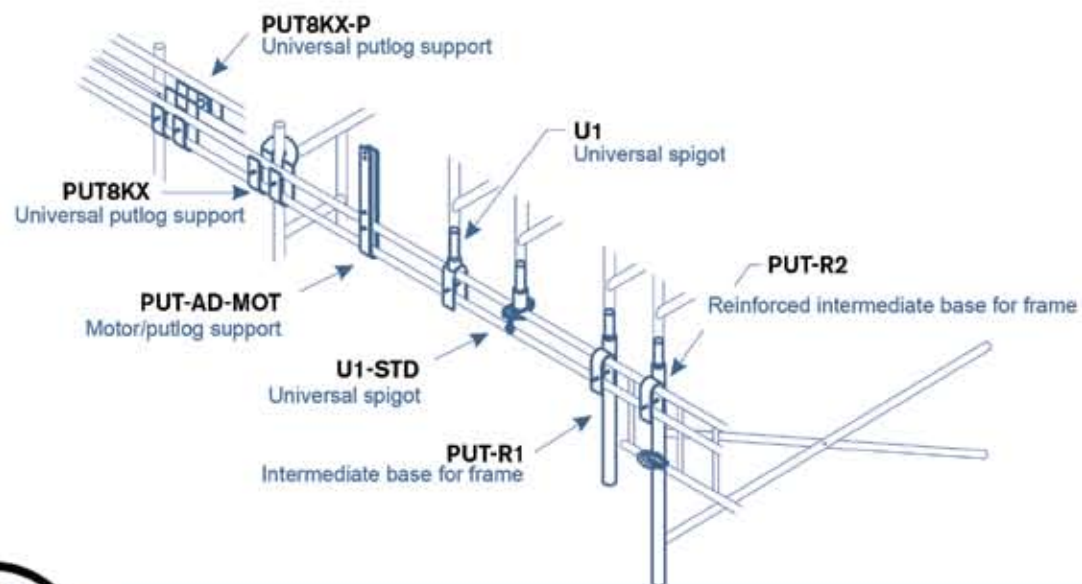
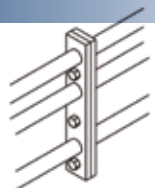
Code	Length	Width	Load capacity
P1020M	3.05 m (10')	50 cm (19.5")	3.6 Kpa (75 lbs/pi)
P820M	2.44 m (8')	50 cm (19.5")	3.6 Kpa (75 lbs/pi)
P720M	2.14 m (7')	50 cm (19.5")	3.6 Kpa (75 lbs/pi)
P620M	1.83 m (6')	50 cm (19.5")	3.6 Kpa (75 lbs/pi)
P1024A	3.05 m (10')	61 cm (24")	2.4 Kpa (50 lbs/pi)

Putlogs



Code	Type	Length	Weight
PUT06		1.8 m (6')	9 kg (19 lbs) *
PUT08		2.4 m (8')	12 kg (25.7 lbs)
PUT12		3.6 m (12')	18 kg (38.8 lbs)
PUT22		6.7 m (22')	56 kg (122.5 lbs)
Modular			
PUT04C		1.2 m (4')	13 kg (28 lbs) *
PUT06C		1.8 m (6')	21 kg (46.3 lbs)
PUT10C		3.1 m (10')	28 kg (61.1 lbs)
PUT12C		3.6 m (12')	34 kg (74 lbs)
PUT16C		4.9 m (16')	44 kg (97 lbs)
PUT20C		6.1 m (20')	53 kg (117 lbs)

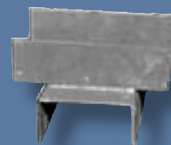
Modular putlog junction



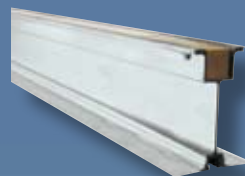
ACCESSORIES



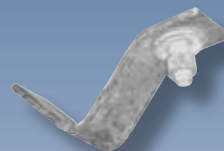
TU1 / TU2



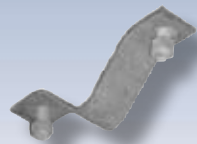
Double TU



SOLxx
6.5" aluminum joist



SOL-V1CLAMP
One-bolt joist clamp



SOL-V2CLAMP
Two-bolt joist clamp

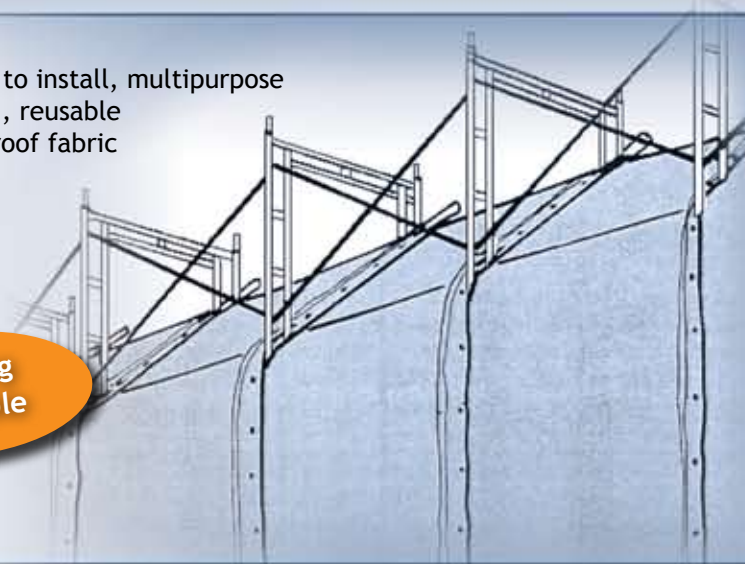
Tarps and debris chutes

Enclosure system

Code	Description
TT1X20	Tarp 0.3 m X 6.1 m (1' X 20')
TT1X30	Tarp 0.3 m X 9.1 m (1' X 30')
TT3X20	Tarp 0.9 m X 6.1 m (3' X 20')
TT3X30	Tarp 0.9 m X 9.1 m (3' X 30')
TT5X20	Tarp 1.5 m X 6.1 m (5' X 20')
TT5X30	Tarp 1.5 m X 9.1 m (5' X 30')
TT7X20	Tarp 2.1 m X 6.1 m (7' X 20')
TT7X30	Tarp 2.1 m X 9.1 m (7' X 30')
TT8X20	Tarp 2.4 m X 6.1 m (8' X 20')
TT8X30	Tarp 2.4 m X 9.1 m (8' X 30')
TT10X20	Tarp 3.0 m X 6.1 m (10' X 20')
TT10X30	Tarp 3.0 m X 9.1 m (10' X 30')
TT-CORDE	Attache (corde)

Economical, easy to install, multipurpose
No wood required, reusable
Available in fireproof fabric
(for sale only)

Netting
available



Debris chutes

Steel chutes 61 cm (24") in diameter and plastic chutes 76 cm (30") in diameter

CHUTE	Code	Type	Height	Diameter
	CHUTE5	steel	152 cm (60")	61 cm (24")
	CHUTE-SR	plastic	122 cm (48")	91 cm (36") 76 cm (30")
	CHUTE-P	steel	152 cm (60")	61 cm (24")
	CHUTE-SD	plastic	122 cm (48")	91 cm (36") 76 cm (30")
	CHUTE3	steel	91 cm (36")	61 cm (24")
	CHUTE-AD CHUTE2M	steel	61 cm (24")	61 cm (24")
	CHUTE22	steel	152 cm (60")	61 cm (24")
	CHUTE-SH	plastic	122 cm (48")	91 cm (36") 76 cm (30")

